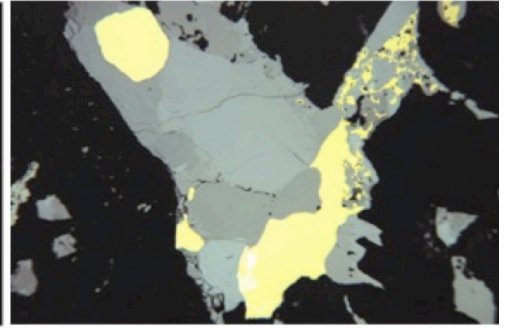
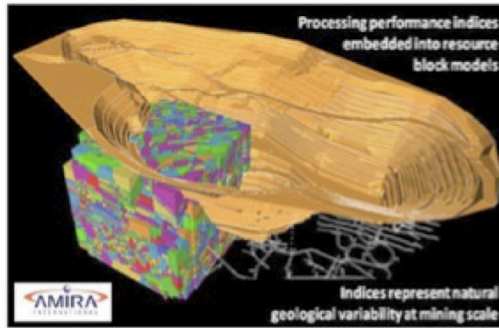
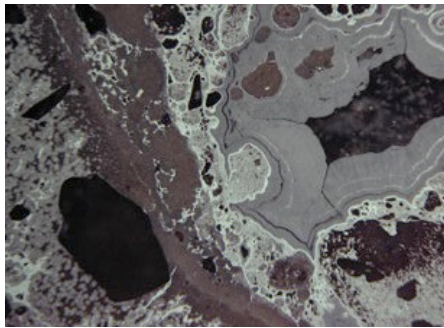


Environmental Geochemistry of Mine Waste - Geometallurgy

Prof. Bernhard Dold (Luleå University of Technology, Sweden)
Dr. Rainer W. Lehne (Mineral Resource Consultant, Mannheim, Germany)

Wednesday, 25 - Thursday, 26 January 2017 (8h30-17h)
(Room 201, microscopy labs in room B23)



Part I : Geometallurgy

Dr. Rainer W. Lehne (25 Jan)

- Mineralogy as a decisive factor in the evaluation and exploitation of mineral resources
- Processing of gold and base metal ores
- Specific tasks of microscopy in ore processing
- Microscopy of gold ore
- Microscopy of base metal ores and milling products

Part II: Environmental Geochemistry of Mine Waste

Prof. Dr. Bernhard Dold (26 Jan)

- Geochemical reactions and environmental problems associated with the management of wastes from mining and milling operations.
- Summary of the environmental geochemistry of ore deposits and examples of their application for a more sustainable mining operation.
- The future of mine waste management

The course takes place at : Department of Earth Sciences, University of Geneva, Rue des Maraîchers 13, CH-1276 Geneva, Switzerland

Registration is open on the website <http://mineral.cuso.ch/courses-and-meetings/>

Only for Day 1: Maximum 12 participants (limitation due to microscope equipment). **Please, inform us if you plan to attend only Day 2.**

Contact: lluis.fontbote@unige.ch